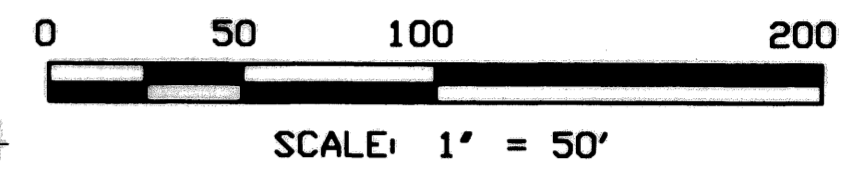


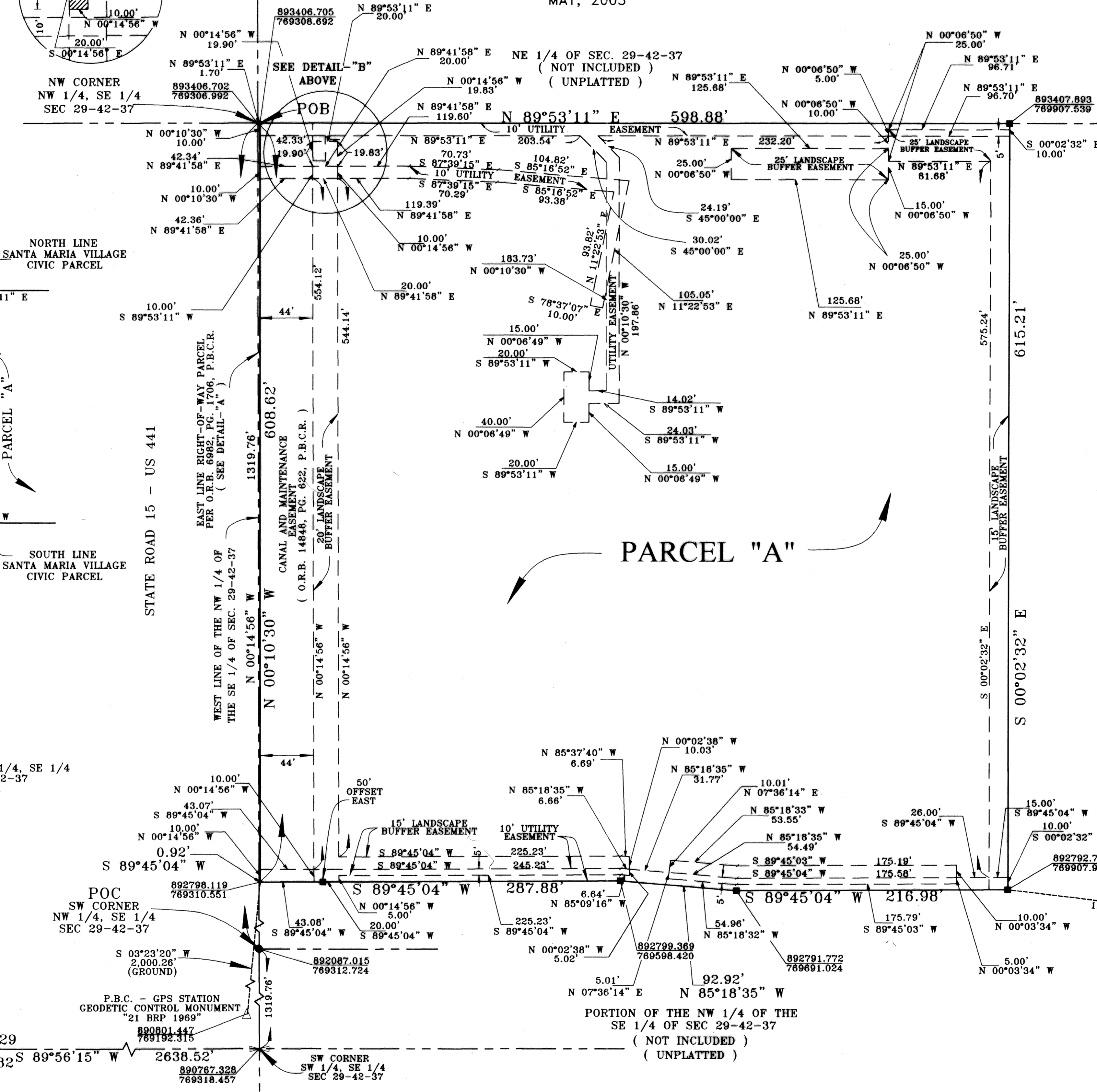
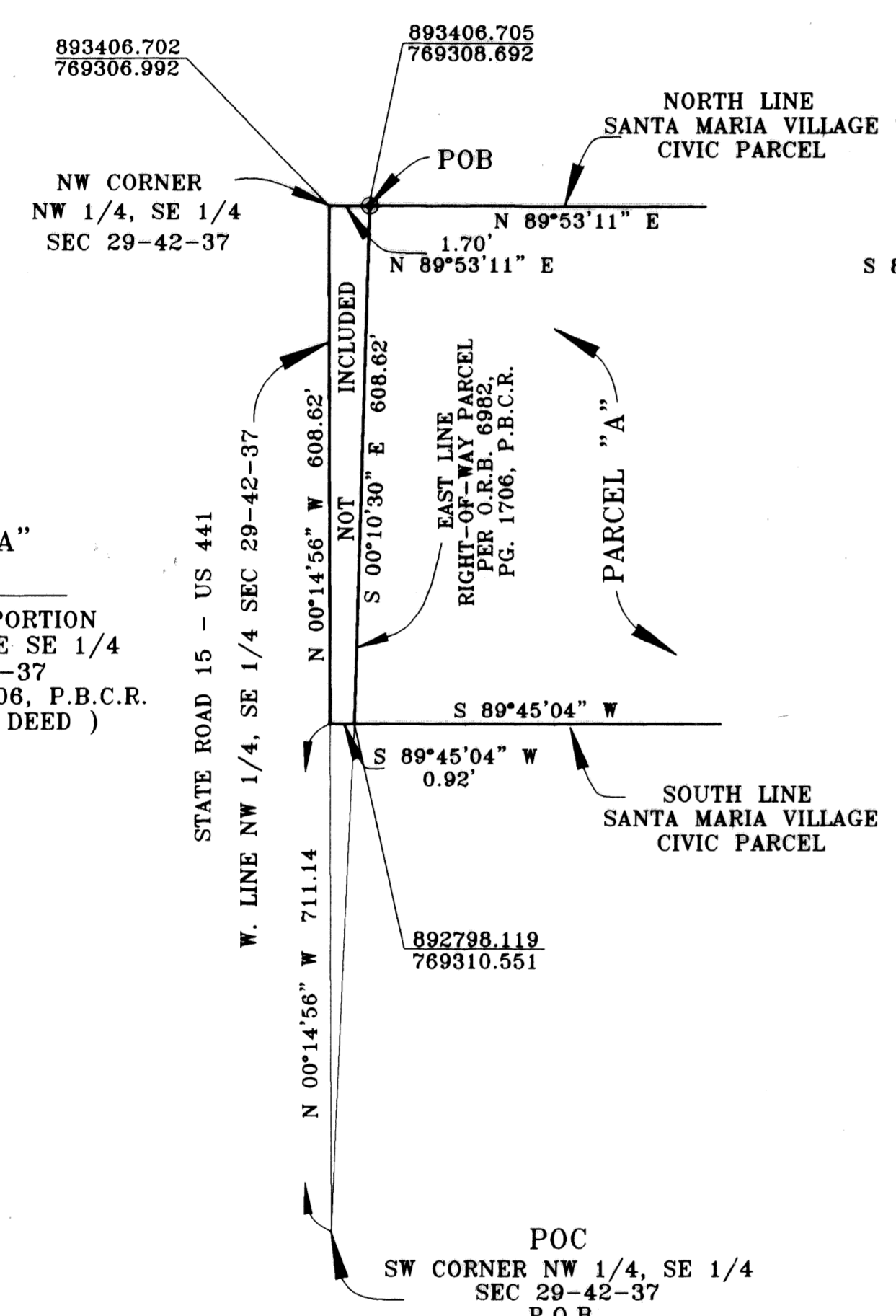
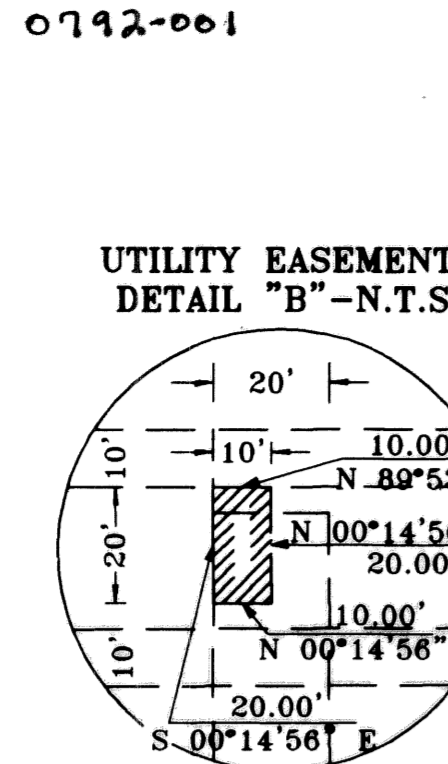
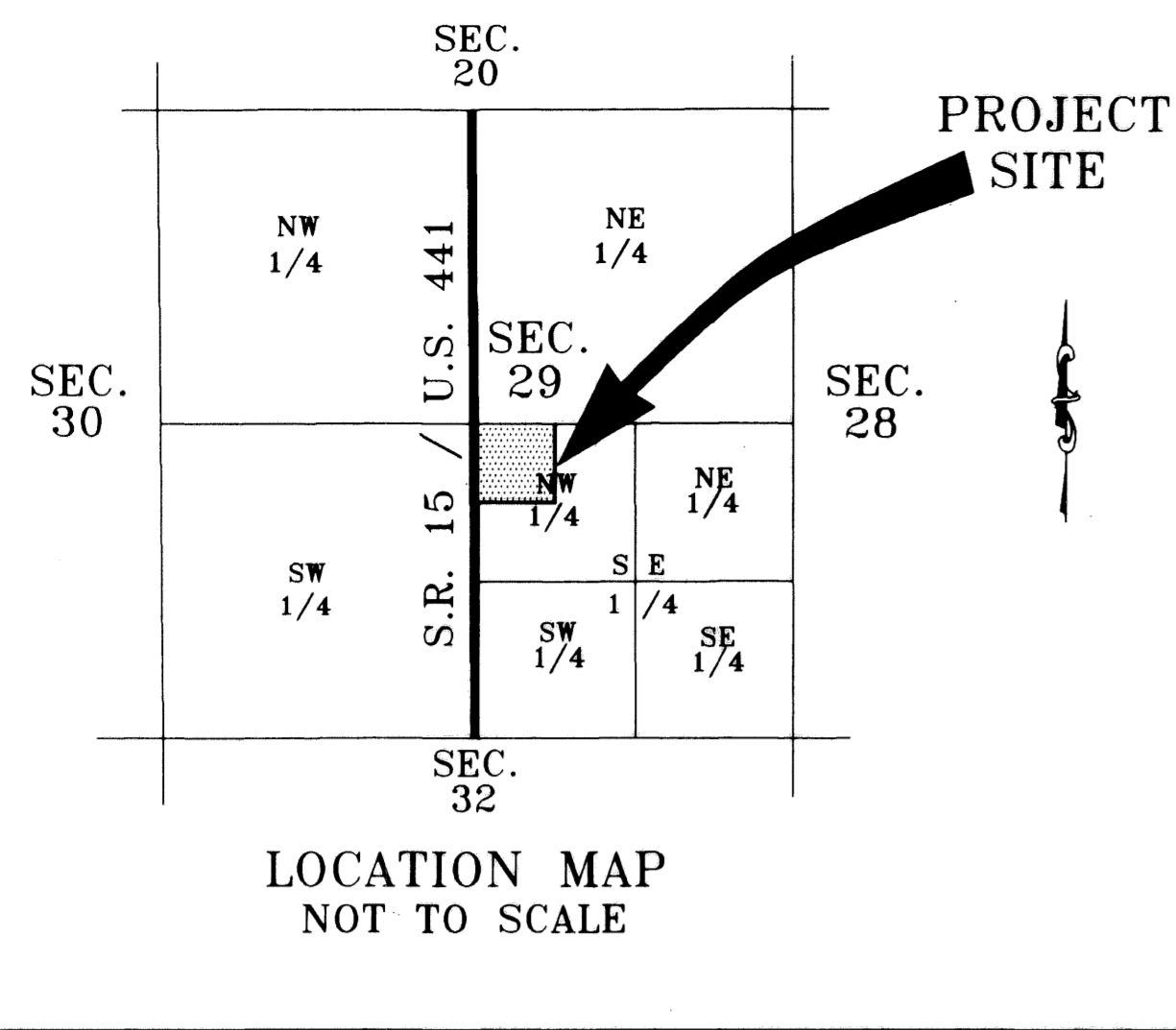
STATE OF FLORIDA
COUNTY OF PALM BEACH
THIS PLAT WAS FILED FOR
RECORD AT _____
THIS _____ DAY OF _____
2002 AND DULY RECORDED IN
PLAT BOOK NO. _____ ON
PAGE _____

DOROTHY WILKEN
CLERK OF THE CIRCUIT COURT
OF PALM BEACH COUNTY
FLORIDA
BY: _____
DEPUTY CLERK



SANTA MARIA VILLAGE P.U.D. CIVIC PARCEL

A PLANNED UNIT DEVELOPMENT BEING
A PORTION OF SECTION 29, TOWNSHIP 42 SOUTH, RANGE 37 EAST
PALM BEACH COUNTY, FLORIDA
MAY, 2003



LEGEND:

NORTHING	COORDINATE VALUES
EASTING	OFFICIAL RECORD BOOK
O.R.B.	NOT TO SCALE
N.T.S.	PALM BEACH COUNTY
P.B.C.	PALM BEACH COUNTY RECORDS
P.B.C.R.	PAGE
PG.	POINT OF BEGINNING
POB	POINT OF COMMENCEMENT
POC	SECTION/TOWNSHIP/RANGE
SEC 00-00-00	SET 4"x4" CONCRETE MONUMENT
■	PERMANENT REFERENCE MONUMENT
●	(LB# 3110)
○	SET NAIL AND WASHER
	PERMANENT REFERENCE MONUMENT
	(LB# 3110)

PORTION OF THE NW 1/4 OF THE
SE 1/4 OF SEC 29-42-37
(NOT INCLUDED)
(UNPLATTED)

COORDINATES SHOWN ARE GRID
DATUM: NAD 1983, 1990 ADJUSTMENT AS
READJUSTED BY PALM BEACH COUNTY IN 1998.
ZONE: FLORIDA EAST ZONE
LINEAR UNIT: US SURVEY FOOT
COORDINATE SYSTEM: 1983 STATE PLANE TRANSVERSE
MERCATOR PROJECTION
ALL DISTANCES ARE GROUND
SCALE FACTOR: 0.99995823
GROUND DISTANCE X SCALE FACTOR = GRID DISTANCE
PLAT BEARING = GRID BEARING (NO ROTATION)

PARCEL "A"

NOTICE:

THIS PLAT AS RECORDED IN ITS GRAPHIC FORM, IS THE OFFICIAL
DEPICTION OF THE SUBDIVIDED LANDS DESCRIBED HEREIN AND WILL
IN NO CIRCUMSTANCES BE SUPPLANTED IN AUTHORITY BY ANY
OTHER GRAPHIC OR DIGITAL FORM OF THE PLAT. THERE MAY BE
ADDITIONAL RESTRICTIONS THAT ARE NOT RECORDED ON THIS PLAT THAT
MAY BE FOUND IN THE PUBLIC RECORDS OF THIS COUNTY.

THIS INSTRUMENT WAS PREPARED BY ROBERT D. KEENER
FLORIDA LICENSED SURVEYOR AND MAPPER, LICENSE NO. LS-4846
IN AND FOR THE OFFICE OF:

CRAIG A. SMITH & ASSOCIATES
CONSULTING ENGINEERS-PLANNERS-SURVEYORS-GRANTS SPECIALISTS
242 ROYAL PALM BEACH BOULEVARD
ROYAL PALM BEACH, FLORIDA 33411
(561) 791-9280
CERTIFICATE NO. LB-3110

SANTA MARIA VILLAGE - CIVIC PARCEL

PROJ NO 99-0750 CADD FILE 0750P002 05/14/03 SHEET 2 OF 2

SUBDIVISION SANTA MARIA VILLAGE PUD CIVIC PARCEL
PAGE 147
PLAT BOOK 0506
ZONING PUD
SE
TAZ 1706
PUD NAME SANTA MARIA VILLAGE